



# MARUICHI CONDUIT

## "C.E.-MARUICHI" HOT-DIP GALVANISED STEEL CONDUITS

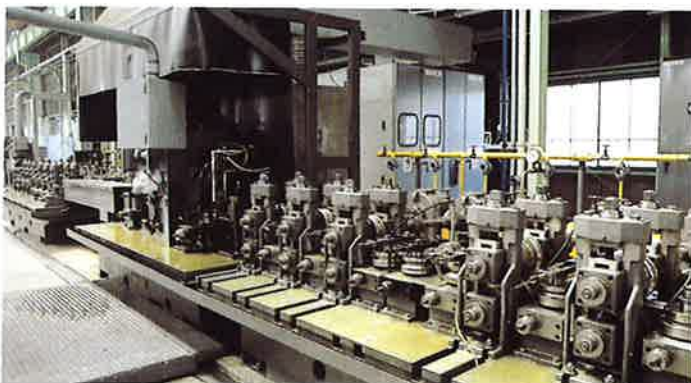
Made Expressly for TAMCO ELECTRICAL & ELECTRONICS (H.K.) LTD. to  
INTERNATIONAL STANDARD IEC614-2-1 1982 AMENDMENT 1 1993-10  
Specification for conduits for electrical installations, Part 2 : Particular  
specifications for conduits, Section One-Metal conduits



Finished conduits, marked with brand name, classification codes and identification



The continuous galvanising system processing conduits shell



One of our precision "high frequency welding" tube mills producing conduits shell

The "C.E.-MARUICHI" brand electrical conduits have been supplied on an on-going basis to the Hong Kong and Macau markets since 1978. Our uninterrupted efforts towards better quality have paid off in winning wide acceptance among end users.

Hot-dip galvanised both inside and outside, this product meets the tests for resistance to corrosion required in IEC614-2-1 conduits with high protection on the outside and the inside, and is furnished with both ends threaded .

The "C.E.-MARUICHI" electrical conduits are fabricated and finished on Maruichi's modern, automated production lines, from feeding of stock, conduits-shell making, hot-dip galvanising to clear lacquer coating, threading, coupler fitting and packing. The superior production facilities, backed up by advanced manufacturing technology, assures uniform-quality conduits with the following advantages :

- (1) Easy to use ... to cut, bend, thread and draw cables through at the the job site.
- (2) Extremely high resistance to corrosion.
- (3) Clean installation work made possible with the smooth and lustrous conduits surfaces.

**MARUICHI STEEL TUBE LTD.**

OSAKA, JAPAN



# MARUICHI CONDUIT

## "C.E.-MARUICHI" HOT-DIP GALVANISED STEEL CONDUITS

### STANDARD PACKING APPEARANCE

### GENERAL INFORMATION ON "C.E.-MARUICHI" CONDUITS

- Adequately protected against corrosion, both inside and outside, with hot-dip zinc coating, to meet the tests for resistance to corrosion as stipulated in IEC614-2-1 conduits with high protection.
- Outside surface coated with clear resin for further protection against white rust.
- Threads also are coated against corrosion; threads on conduit with silver paint, and those on inside couplers with electrogalvanising.
- Threads are protected against atmospheric attack.
- Each lift end is totally wrapped with plastic films, to provide protection in transit.



Packed conduits ready for shipping

### DIMENSIONS, WEIGHTS AND NUMBER OF CONDUITS IN STANDARD PACKING

## IEC 614-2-1

### HOT-DIP GALVANISED STEEL CONDUITS

© Made in Accordance with IEC614-2-1 AMENDMENT 1

© Screw threads in Accordance with IEC423

#### Threadable Conduits

size	Dimensions (mm)				Weights (g/m)		Number of pieces in standard packing	
	Outside diameter		Wall thickness and tolerance	Length of thread	Min.	Max.	per bundle	per lift
	Min.	Max.						
20	19.7	20.0	1.6 ± 0.15	14.0 ± 3	682	862	10	250
25	24.6	25.0	1.6 ± 0.15	17.0 ± 3	860	1095	10	200
32	31.6	32.0	1.6 ± 0.15	19.0 ± 3	1133	1432	7	140

Standard Length : 3,700mm without coupler.

### MARKING OF CONDUITS according to IEC 614-2-1

C.E.-MARUICHI CONDUITS are marked once on each manufacturing length in Accordance with IEC614-2-1 (IEC614-1) as follows :

① RMC ② 25 ③ C.E.-MARUICHI CONDUIT ④ 5/100060 ⑤  
 IEC 614-2-1 ⑥ MADE IN JAPAN

① Type reference : Rigid Metal Conduits

② Size : 20, 25 or 32

③ Manufacturer : maker's trade mark

④ Mandatory Marking Code : Metal conduits shall be marked a single digid code denoting mechanical properties → Very heavy mechanical stresses ... 5

⑤ Additional marking Code :

First digid : Rigid conduits ... 1

First digid : Conduits with high protection  
Outside and Inside ... 6

⑥ Standard Specification : IEC 614-2-1

NOTE : The marking of 5/100060 denote a rigid metal conduits suitable for very heavy mechanical stress, with high protection against corrosion both outside and inside.



## MARUICHI STEEL TUBE LTD.

OSAKA, JAPAN

The Manufacturer of MARUICHI CONDUIT



## MARUICHI KOHAN LTD.

OSAKA, JAPAN

The Sole Export Outlet of MARUICHI CONDUIT

DISTRIBUTED IN HONG KONG AND MACAU MARKETS EXCLUSIVELY BY :



## ANCOM Electrical

安高機電(香港)有限公司  
九龍觀塘海濱道165號  
中藝大廈15樓1501室

Ancom Electrical (Hong Kong) Limited  
(Formerly known as Tamco Electrical (HK) Ltd.)  
Rm 1501, 15/F., CAC Tower, 165 Hoi Bun Road,  
Kwun Tong, Kowloon, Hong Kong  
Tel : (852) 2833 6966  
Fax : (852) 2838 0724  
www.ancom.com.hk